



MiSide

2024 Annual Report



The Impact We Made Together in 2024

The Impact We Made Together in 2024

9,029

**TOTAL
SERVED**



MiSideHealth

4,925

Total Served



1,986 Adults in **Outpatient Counseling**

385 Served through Supportive Services for **Veteran Families**

736 **Housing Stability Service** Participants

29 Served through **JJ Programs**

26 **Summer Program** Students

22 Youth Served in the **Cornerstone Program**

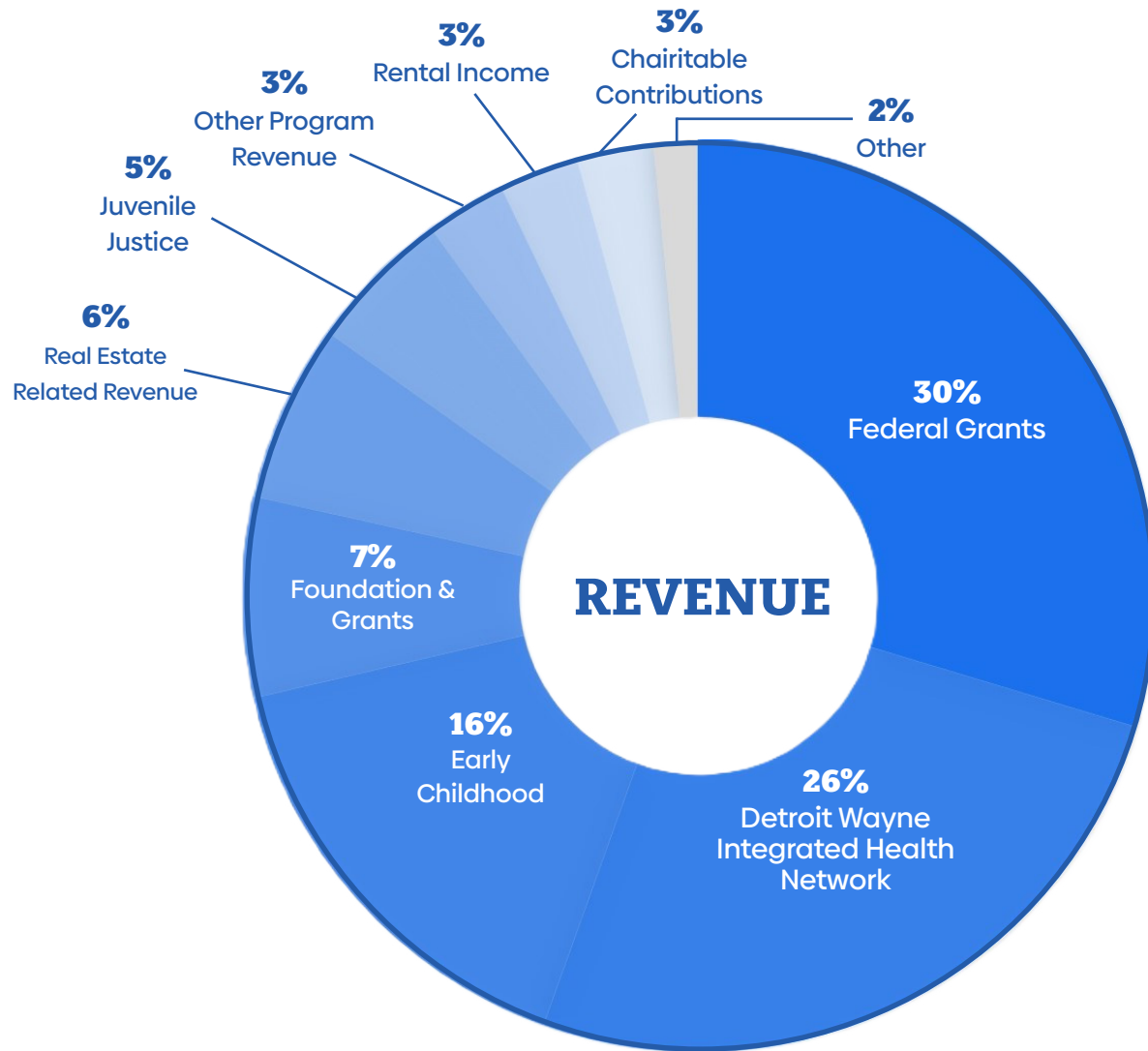
31 Children Enrolled in **Wraparound**

314 Children in **Outpatient Counseling**

89% Clients Report Feeling **Accepted**



MiSide



Federal Grants	\$13,148,843	29.66%
Detroit Wayne Integrated Health Network	\$11,446,324	25.82%
Early Childhood	\$7,043,100	15.89%
Foundation and Other Grants	\$3,156,291	7.12%
Real Estate Related Revenue	\$2,820,391	6.36%
Juvenile Justice	\$2,283,684	5.15%
Other Program Revenue	\$1,266,605	2.86%
Rental Income	\$1,260,233	2.84%
Charitable Contributions	\$1,215,888	2.74%
Other	\$ 691,689	1.56%

MiSideHousing

784

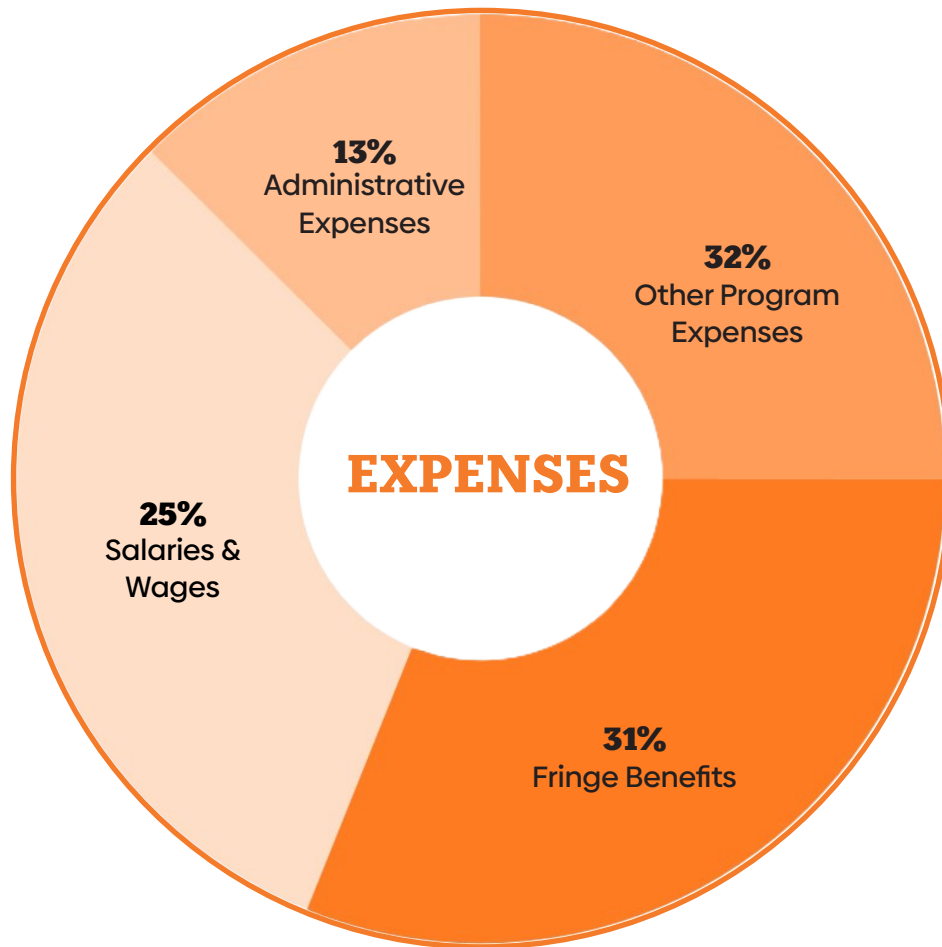
People Living in
Affordable Housing



146 Affordable **Single Family Units** and **Townhouses**

13 Affordable **Apartment Communities**

80% of Residents Report **Feeling Safe** in their
Apartment or Housing Community



Other Program Expenses	\$21,993,325	31.36%
Fringe Benefits	\$21,780,261	31.06%
Salaries and Wages	\$17,548,910	25.02%
Administrative Expenses	\$8,810,281	12.56%

MiSideWealth

2,605

Total Served



234 Learning Lab Participants

47 Participants Enrolled in **GED** and **ABE**

213 Homebuyer Education Participants

104 Home Preservation: completed the **HOPE** application

55 Enrolled in Youth services: Enrolled in the **Youth Program**

110 Received **Pre-Purchase Homebuyer** Counseling

47 Placed in **Employment** through Earn + Learn

390 Found **Employment**

10 Participants Earned their **GED**

425 Training Enrollments

137 Received **Financial Coaching**

136% 90-Day **PATH** Retention

57 Completed Earn + Learn **Job Training**

187 People Received 2/3 or 3/3 **Key Services** through Center For Working Families



1307 Caregivers and Parents Engaged in
Cultivating Strong Bonds with their Children

214 Teachers Engaged in Professional Development
Enrolled in the **Program**

18.097 Hours **Volunteered** by
Early Childhood Champions

89 Early Childcare **Businesses**
Served in NW Detroit



EXECUTIVE COUNCIL



Sean de Four
President and
Chief Executive Officer



Michelle R. Sherman
Chief Operating Officer, Chief
Financial Officer



Jamie Ebaugh
Executive Director
MiSide Health



Hector Hernandez
Executive Director
MiSide Wealth



Pam Savoy-Weaver
Executive Director
MiSide EarlyYears



Tim Thorland
Executive Director
MiSide Housing



Tanisha Black
Senior Director, Quality and
Corporate Compliance





**5716 Michigan Avenue
Suite 3000
Detroit, MI 48210
313-481-3102**

miside.org